



**GORDON FLESCH<sup>®</sup>**  
 COMPANY, INC.  
 BUSINESS TECHNOLOGY. MANAGED.<sup>®</sup>

# RICOH

The Gordon Flesch Company (GFC), the Midwest's largest independent office equipment dealer, is an authorized Ricoh Family Group (RFG) dealer partner.

## A WINNING COMBINATION



SECURE

ALWAYS UP-TO-DATE

SMART

CLOUD CONNECTIVITY  
& VOICE COMMAND

SIMPLE

CUSTOMIZABLE MENUS  
& MOBILE PRINTING

SUPERIOR

FAST, POWERFUL PRINTERS

SUSTAINABLE

LOWEST IN ENERGY  
CONSUMPTION

## SECURE



**RICOH ALWAYS CURRENT TECHNOLOGY** ensures that new features, applications and upgrades can be downloaded and installed directly to your device as they become available.

The **RICOH ONLY** operating system keeps out cyberthreats that can take down other networked devices.



**RICOH**  
**SECURE**

*FACT: A Ricoh device will not boot up unless its software is verified to be authentic.*

# SMART

## RICOH INTELLIGENT VOICE CONTROL

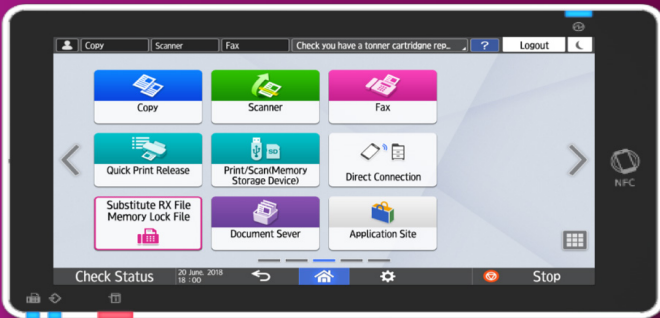
offers voice-activated controls for productivity and accessibility for disabled users.

“Hey Alexa,  
print my  
documents.”



*“Ricoh’s integrated portfolio offering is the obvious differentiator in the market.”<sup>1</sup>*

# SIMPLE



The **RICOH SMART OPERATION PANEL** is simple and intuitive, like a smart phone or tablet. Choose from multiple user interfaces and customize the look and layout to meet your preferences.

# SUPERIOR

Ricoh has a deep set of production print solutions plus advanced finishing and workflow automation services.



***FACT:** Ricoh is the fastest growing Color Production Manufacturer.<sup>1</sup>*

# SUSTAINABLE

- Ricoh Intelligent Devices have one of the lowest energy consumption levels in the industry
- Ricoh is ENERGY STAR<sup>®</sup> certified and qualifies for EPEAT<sup>®</sup> Gold criteria.



800.333.5905 | [gflesch.com](http://gflesch.com)



<sup>1</sup> Source: Infotrends Q1 2019